



LIVING COUNTRY

EQUIPMENT FOR RURAL PROPERTY CARE



The 3PH Grader Blade from MK Martin makes maintaining your driveway and gravel areas easy. Ruggedly built with a reversible cutting edge, these blades are designed for years of service. The manual blades have five stops of angle adjustment including a full turn around, while the Hydraulic Angle blades allow you to control the blade from the comfort of your seat. With widths to match your equipment and property there is a MK Grader blade to help keep your grades up.





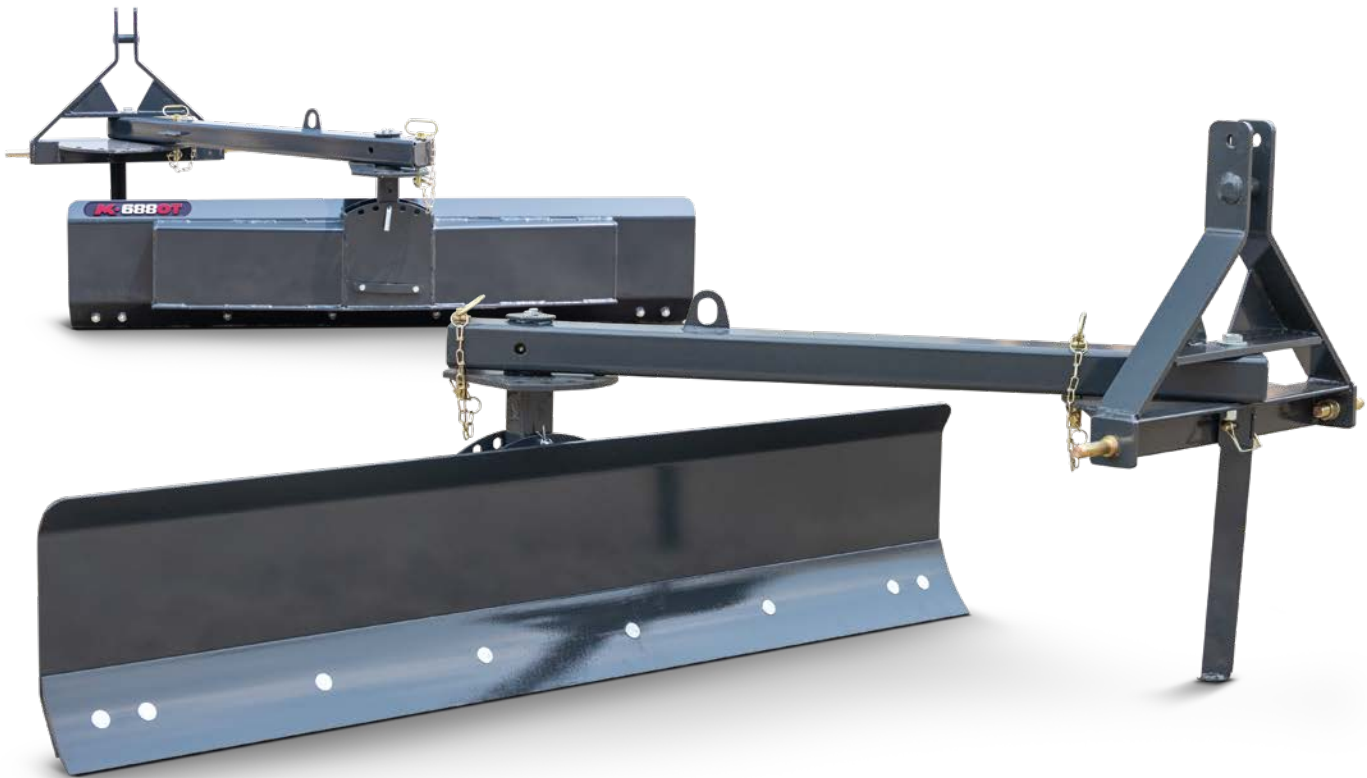
SPECIFICATIONS

Model	Max. HP	Width	Mouldboard	Mouldboard Height	Center Pin	Max angle position	Width when Angled	3PH Mount	Weight (LBS.)
MKGB588	45	5'	3/16"	15"	2"	45 deg Left/Right	42"	Cat. 1	180
MKGB688	45	6'	1/4"	15"	2"	45 deg Left/Right	50"	Cat. 1	200
MKGB788	45	7'	1/4"	15"	2"	45 deg Left/Right	59"	Cat. 1	215
MKGB798	75	7'	3/8"	15"	3"	45 deg Left/Right	72"	Cat. 2	577
MKGB898	75	8'	3/8"	15"	3"	45 deg Left/Right	82"	Cat. 2	616

OPTIONAL HYDRAULIC ANGLE

Model	Description
MKGB88ANG	Hydraulic Angle - Includes the Hydraulic Cylinder and Hoses
MKGB98ANG	Hydraulic Angle - Includes the Hydraulic Cylinder and Hoses



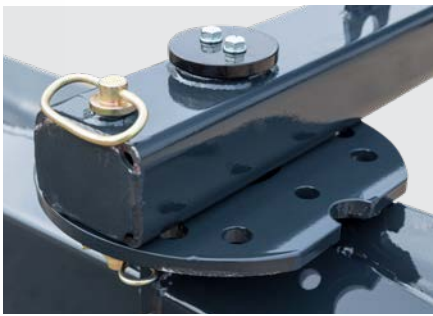


Available in 5, 6, and 7 foot widths, this versatile grader blade is designed for tractors equipped with Cat 1 3PH. This grader blade features offset, tilt, and angle adjustments each with 5 positions, allowing it to tackle any job you can throw at it. The blade is also able to reverse 180°, allowing you to grade your property while backing up for even more options. No matter your job, these blades will make the grade.

SPECIFICATIONS

Model	MKGB5880T	MKGB6880T	MKGB7880T
HP	30 - 50	30 - 50	30 - 50
Hitch	Cat. 1	Cat. 1	Cat. 1
Width	60"	72"	84"
Weight (LBS.)	250	258	270
Reverse	Yes	Yes	Yes
Mouldboard	1/4"	1/4"	1/4"
Mouldboard Height	15"	15"	15"
Cutting Edge		3/8 x 6 Reversible	
Angle (Control)	Manual	Manual	Manual
Angle (Position)		5 Forward / 5 Reversed	
Offset Adjust	5 Positions	5 Positions	5 Positions
Tilt Adjust	5 Positions	5 Positions	5 Positions
Offset	24" left / 24" right	24" left / 24" right	24" left / 24" right
Max angle position	45 deg Left/Right	45 deg Left/Right	45 deg Left/Right
Width when Angled	42"	50"	59"

Angle Adjustment



5 stops of angle adjustment provides the right amount of surface coverage and material flow for your leveling tasks.

Mouldboard



The mouldboard is designed to roll material forward while spreading it across the cutting edge for even distribution.

Cutting Edge



The 1/2" x 6" curved cutting edge ensures that even tough material gets leveled. The cutting edge can also be reversed for even longer life.

Full Turn Around



The full turn around feature allows you to knock down crowns while smoothing your lane. It also allows you to complete light duty tasks while reversing the tractor.

Stand



An integrated stand provides safe storage and eases the hook up process.

Hydraulic Angling

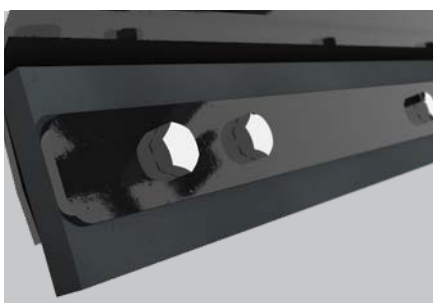


The optional hydraulic angling kit allows you to control the angles using your equipment's hydraulics from the comfort of your cab.

8" Stroke on 588, 688, and 788 models
12" Stroke on 798 and 898 models

OPTIONS

Rubber Cutting Edge



These optional rubber cutting edges are ideal for snow removal, reducing damage to driveways.

Hydraulic Kit



Includes hoses, cylinders, bolt-on plates, hardware.

Replaceable Scarifier Tips on removeable shanks.



Xtreme Duty Grader Blade for 100-250 HP Tractors.

The Xtreme Duty Grader Blade from MK Martin mounts to your tractors 3-point hitch. Powered by your tractors hydraulics the XD series blade has hydraulic cylinders to adjust the offset of the arm, the blade angle, and the tilt of the blade. An additional hydraulic cylinder on the optional wheel kit helps to control the depth.

The Xtreme Duty grader blade is available in 8' - 14' models for tractors with a rated horsepower of 100 - 250 HP.

Available options include dual gauge wheel kit with hydraulic cylinder.

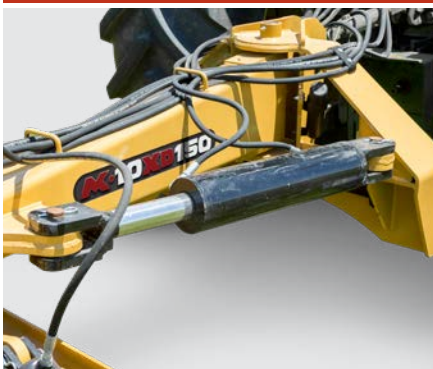
- Hydraulic Angle
- Hydraulic Tilt
- Hydraulic Offset



SPECIFICATIONS

Model	MK8XD-100	MK9XD-100	MK9XD-150	MK10XD-150	MK12XD-250	MK14XD-250
Horse Power (Max.)	100	100	150	150	250	250
3PH Mount	Cat. 2 & 3					
Mouldboard Thickness	5/16"				3/8"	3/8"
Mouldboard Width	96"	108"	108"	120"	144"	168"
Mouldboard Height	20"				20"	20"
Offset Adjustment	27" left or right (hydraulic)					
Adjustment Angle	32° left or right (hydraulic)			37° left or right (hydraulic)		
Adjustment Tilt	13° blade adjustment (hydraulic)					
King Pin	3-1/2"	3-1/2"	4"	4"	5"	5"
Cutting Edge	High Carbon 1/2" x 6" (reversible)					
Weight (LBS.)	1,572	1,666	1,695	1,745	1,925	2,075

Hydraulic Offset



The hydraulic offset offsets the XD Grader Blade from your tractor, while retaining the current angle and tilt.

Hydraulic Angle



Angling the XD Grader Blade allows you to direct the material off the path, or feed the material directly into your path to level out high and low areas.

Hydraulic Tilt



Easily tilt your XD grader blade allowing for better drainage on your path, or flatten out an angled path.

OPTIONS

Dual Gauge Wheel Kit with Hydraulic Cylinder



The optional dual gauge wheel kit provides more stability as you tilt, offset, and angle the XD Grader Blade giving you more control over the flow of material. The hydraulic cylinder raises and lowers the wheel giving you even more control over the finished product.

Box End Plates



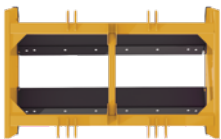
Skid Shoe Kit



OPTIONS

Part #	Description	Weight
MKGBXD-TW	Tail Wheel Kit	310 lbs.
MKGBXD-EP	Box End Plates	
MKGBXD-SK	Skid Shoe Kit	





Top View



FEATURES

- Two 1/2" x 6" Reversible Cutting Edges
- 3/8" x 2 Reversible Skid Shoes
- Cutting edges can be manually adjusted to your desired cutting depth for optimal performance
- Order Mount separately (3PH or Skidsteer Adapter)
- AR400 Abrasion-Resistant Skid Shoes

OPTIONS

- Mount – Select the correct mount for application at time of order

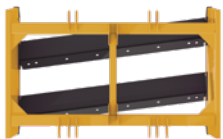
SPECIFICATIONS

Model	Working Width	Overall Width	Skid Shoes	Mouldboard Thickness	Cutting Edge	Weight (LBS.)
MKGL578	60"	65"	3/8" x 2 Reversible	1/4"	1" Adjustment	600
MKGL678	72"	77"	3/8" x 2 Reversible	1/4"	1" Adjustment	665
MKGL778	84"	89"	3/8" x 2 Reversible	1/4"	1" Adjustment	730
MKGL878	96"	101"	3/8" x 2 Reversible	1/4"	1" Adjustment	796

NOTE: Hitch must be ordered separately.

OPTIONS

Options	Part #	Weight (LBS.)
Optional Skidsteer Adapter	MKGLSSMNT	156
Optional 3PH Adapter (Cat. 1 & 2)	MKGL3PTMNT	36



Top View



FEATURES

- Two angled 1/2" x 6" Reversible Cutting Edges
- Cutting Edge Angled between 5° - 9° depending on model
- 3/8" x 2 Reversible Skid Shoes
- Cutting edges can be manually adjusted to your desired cutting depth for optimal performance
- Order Mount separately (3PH or Skidsteer Adapter)
- AR400 Abrasion-Resistant Skid Shoes

OPTIONS

- Mount – Select the correct mount for application at time of order

SPECIFICATIONS

Model	Working Width	Overall Width	Skid Shoes	Mouldboard Thickness	Cutting Edge	Cutting Angle (Deg.)	Weight (LBS.)
MKGL578A	60"	65"	3/8" x 2 Reversible	1/4"	1" to -0.5"	9	568
MKGL678A	72"	77"	3/8" x 2 Reversible	1/4"	1" to -0.5"	7	632
MKGL778A	84"	89"	3/8" x 2 Reversible	1/4"	1" to -0.5"	6	697
MKGL878A	96"	101"	3/8" x 2 Reversible	1/4"	1" to -0.5"	5	761

NOTE: Hitch must be ordered separately.

OPTIONS

Options	Part #	Weight (LBS.)
Optional Skidsteer Adapter	MKGLSSMNT	156
Optional 3PH Adapter (Cat. 1 & 2)	MKGL3PTMNT	36

Bolt-On Skid Shoes



The bolt-on skid shoes allows the Grader Leveler to effortlessly run over your path without damaging the product, or damaging the area you're leveling.

1/2" Reversible Hardened Cutting Edges



With two half inch reversible hardened cutting edges material is quickly leveled or redistributed to fill low points as the unit passes.

Flow Over Design



Flow over design means operators don't need to raise the Grader Leveler to release the material.

Mounting Options



The Grader Leveler can be mounted either with a skidsteer mount or a 3PH mount. Additionally, each Grader Leveler can be equipped with both a skidsteer and 3PH mount allowing for more versatility when leveling your property.





The 3PH Box Blade by MK Martin provides the small and large property owner with affordable options for grading with their line of Box Blades. Complete with steel cutting edges, height adjustable shanks, and a bolt-on 3PH design these Box Blades really deliver.

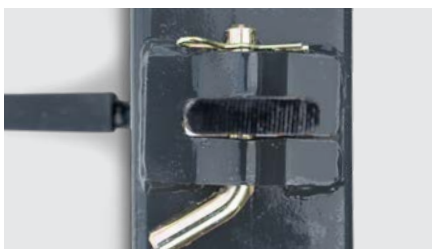
The MK Box Blade features two steel cutting edges. One located on the inside of the box and one on the outside. These two reversible hardened steel cutting edges allow the operator to pull or push material.

Adjustable rippers can be inverted to prevent digging when only material distribution is required.

SPECIFICATIONS

Model	Width	Shanks	Mouldboard	End Plates	3PH Mount	Max HP	Weight (LBS.)
BB448STD	4'	4	3/16"	1/4"	Cat. 1	35 HP	308
BB454STD	4'6"	4	3/16"	1/4"	Cat. 1	35 HP	340
BB560STD	5'	4	3/16"	1/4"	Cat. 1	35 HP	348
BB566HD	5'6"	4	3/16"	1/4"	Cat. 1	45 HP	415
BB672HD	6'	5	3/16"	1/4"	Cat. 1	45 HP	450
BB784HD	7'	6	3/16"	1/4"	Cat. 1	45 HP	500
BB784DLX	7'	6	1/4"	1/4"	Cat. 2	75 HP	555
BB896DLX	8'	7	1/4"	1/4"	Cat. 2	75 HP	612

Height Adjustable



The height adjustable scarifier shanks break up the soil allowing the cutting edge to redistribute the material as the Box Blade is pulled along.

Dual Reversible Edges



Features two 3/8 x 6" curved steel cutting edges, one located on the inside of the box and one on the outside. These reversible hardened steel cutting edges allow the operator to pull or push material.

Replaceable Scarifier



Control how deep the scarifier rips with the Box Blade's easy to use pin adjustment on the shanks. Replaceable scarifier tips are crimped onto the removeable shanks.

Reinforced Shanks [DLX Models Only]



To stand up to heavier jobs, the DLX Series Box Blades feature reinforced shanks. Reinforcement pucks placed at the top and bottom of the structural tube transfers stress from the tines more efficiently.



Designed to revive your laneway or gravel lots, the Land Plane provides acreage owners with a single tool to tear up hardpack, fill potholes, and grade for a smooth desirable finish.

The Land Plane is available in 72", 84", and 96" widths giving operators the ideal working widths for their compact and utility tractors.

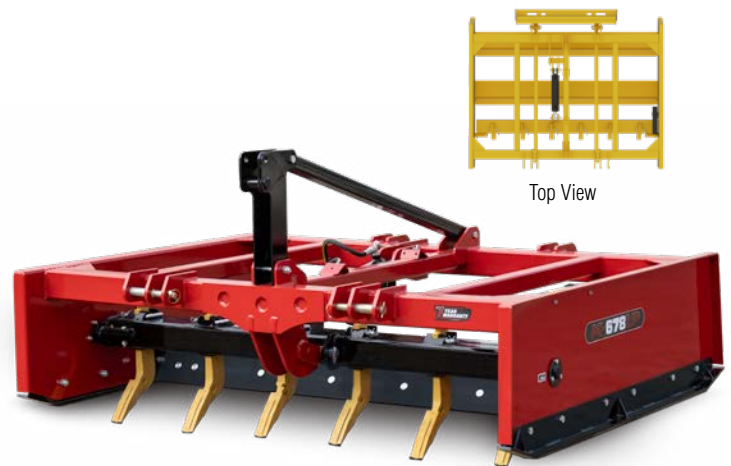
Two hydraulic cylinders power the scarifier bar deep below the surface loosening the hard pan and pulling the material to the surface where it can be redistributed. The hydraulic control allows the operator to adjust pressure on the fly to compensate for the changing ground conditions without having to leave the operators seat.

The Land Plane is available in either skid loader or 3PH mounts.

SPECIFICATIONS

Model	MKLP678	MKLP778	MKLP878
Working Width	72"	84"	96"
Overall Width	77"	89"	101"
Length	69.5"	69.5"	69.5"
Shank (Qty.)	6	6	8
Shank Tube	4" x 6" x 1/4"		
Cutting Edge (x2)	Hardened 1/2" - Reversible 1" Adjustments		
Skid Shoes	3/8" x 2 Reversible		
Cylinder	Dual Hydraulic Cylinders for shank rotation		
Weight (LBS.)	1,140	1,240	1,350

Long wearing grader quality shanks feature height adjustment and replaceable chisel tips.



Long Wearing Shanks



Long wearing grader quality shanks feature height adjustment and replaceable chisel tips.

Hydraulic Cylinders



Two hydraulic cylinders power the scarifier bar deep below the surface loosening the hard pan and pulling the material to the surface where it can be redistributed.

Bolt-On Skid Shoes



The AR400 abrasion-resistant bolt-on skid shoes allows the Land Plane to effortlessly run over your path without damaging the product, or damaging the area you're leveling.

1/2" Reversible Hardened Cutting Edges



With two half inch reversible hardened cutting edges material is quickly leveled or redistributed to fill low points as the unit passes.

Flow Over Design



Flow over design means operators don't need to raise the Land Plane to release the material.

Mounting Options



The Land Plane can be mounted either with a skidsteer mount or a 3PH mount. Additionally, each Land Plane can be equipped with both a skidsteer and 3PH mount allowing for more versatility when leveling your property.



These rugged graders come in a range of sizes from 8 to 12 feet to fit your needs and your equipment. Standard on all models is our 1/2 inch thick reversible hardened cutting edge, ready to smooth out the bumps and fill in the hollows. Cutting depth is controlled by a 3"x12" hydraulic cylinder so you can decide how much of a bite to take and adjust on the go. All models are well suited for feedlot and soil reclamation or swale cutting.

TRAILED MODELS

Models	LLT-8	LLT-10	LLT-12
Width	8'	10'	12'
Mount	Hitch	Hitch	Hitch
Tilt	Yes	Yes	Yes
Cutting Edge	Single	Single	Single
Side Plate	3/8"	3/8"	3/8"
Mouldboard	1/4"	1/4"	1/4"
Wear Plate	NA	NA	NA
Skidbar	1/2" Reversible	1/2" Reversible	1/2" Reversible
Weight	1,555	1,771	1,898



Adjustable Skid Bars



Available on trailed models, the skidbars can be adjusted to better match the wear height of the cutting edge to create a tighter box seal, reducing loss of material as you move it around.

Hydraulic Lift Cylinder



The hydraulic lift cylinder uses your equipment's hydraulic system to raise and lower the Land Leveler giving you the depth you need to grade your material.

Tilt Cylinder/Indicator



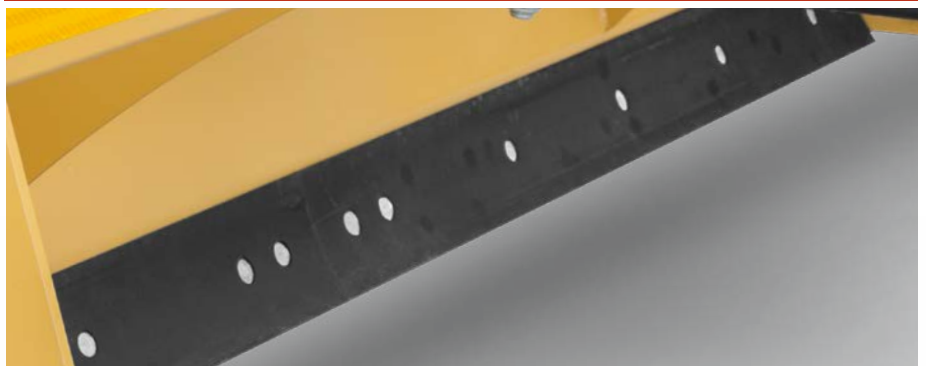
The tilt models of the Land Leveler give you a 10° tilt each direction, and comes equipped with a tilt indicator that displays the current amount of horizontal tilt.

Transport Lock



Each Land Leveler comes equipped with two transport locks, locking the hydraulic lift cylinder in place for ease of transport between storage and field.

Cutting Edge



The Land Leveler comes equipped with a 1/2" x 6" hardened, reversible cutting edge, not just giving you incredible grading power, but also giving you twice the life. Standard on LLP2 models, an additional rear cutting edge is included for leveling while reversing.



LIVING COUNTRY



7 YEAR
WARRANTY

M MKMARTIN

3950 Steffler Rd., Elmira Ontario, N3B 2Z3

Toll Free: 855-664-2752

Tel: 519-664-2752

Email: sales@mkmartin.ca

www.mkmartin.ca

Authorized Dealer

